



SAF-HOLLAND Group

# HOLLAND LANDING GEAR

MARK V

BEST



ATLAS™ 55

BETTER



CLASSIC

GOOD



# HOLLAND LANDING GEAR OFFERING

## FEATURES & BENEFITS

### MARK V

BEST



Still positioned as the best overall landing gear model, the Mark V is suitable for all standard and heavy duty applications. Unsurpassed features ensure that the Mark V delivers the absolute best in Holland landing gear. In addition, a heavy duty version is also available for severe duty applications.

#### CAPACITY

Ultimate Load Capacity	200,000 lbs.
Lift Capacity	62,500 lbs.
Turns Per Inch	High Gear 2.5, Low Gear 33.8
Side Load Capacity	32,000 lbs.
Floating Nut Design	No

#### OPTIONS

No Lube
Low Profile Sandshoe
Heavy Duty 12" x 17" Sandshoe
Self-Leveling Foot
Removable Cushion Foot

**Availability:** Truck load quantity, skid quantity, and individually. Shipped from Woodstock, Ontario. A limited number of variations, in limited quantities, are available from our Warrenton, Missouri facility.

### ATLAS™ 55

BETTER



The Holland Atlas™ 55 Landing Gear is positioned as the better model for standard duty applications. From the smooth shifting and reliability of the patented Constant Mesh gearbox design, to the durability and toughness of the exclusive FloatingNut™ with Twin-Bulkhead construction. Available with optional, corrosion resistant Black Armour treatment.

#### CAPACITY

Ultimate Load Capacity	170,000 lbs.
Lift Capacity	55,000 lbs.
Turns Per Inch	High Gear 4.5, Low Gear 38.7
Side Load Capacity	30,000 lbs.
Floating Nut Design	Yes

#### OPTIONS

Black Armour
Low Profile Sandshoe
Heavy Duty Sandshoe
Removable Cushion Foot

**Availability:** Truck load quantity, skid quantity, and individually. Shipped from Warrenton, Missouri.

### CLASSIC

GOOD



Positioned as the good model for reliability and value. It still includes the Constant Mesh gearbox and the exclusive FloatingNut™ feature found in the Atlas™ 55 model but has limited options while meeting most standard replacement applications.

#### CAPACITY

Ultimate Load Capacity	140,000 lbs.
Lift Capacity	39,000 lbs.
Turns Per Inch	High Gear 3.2, Low Gear 19.3
Side Load Capacity	27,000 lbs.
Floating Nut Design	Yes

#### OPTIONS

Low Profile Sandshoe
Westran Removable Cushion Foot

**Availability:** Container load quantity only. Must be same part number in skid quantity to create a container load.

Prices Effective 12/31/10 and Good Until Further Notice.  
All Prices in US Dollars.

**PART NUMBERS & PRICING**



**BEST**

PART NUMBER	DESCRIPTION	INDIVIDUAL LIST PRICE	SKID* LIST PRICE	TRUCK/CONTAINER** LIST PRICE
<b>LGS-3A105</b>	<b>16.5" Travel Standard Sand Shoe Set</b>	<b>\$678.69</b>	<b>N/A</b>	<b>N/A</b>
XA-S9-3A105	16.5" Left-Hand Driven Leg	\$271.48	\$267.48	\$263.48
XA-S8-3A105	16.5" Right-Hand Drive Leg (Gear)	\$407.21	\$401.21	\$395.21
<b>LGS-5A105</b>	<b>18.7" Travel Standard Sand Shoe Set</b>	<b>\$691.18</b>	<b>N/A</b>	<b>N/A</b>
XA-S9-5A105	18.7" Left-Hand Driven Leg	\$276.47	\$272.47	\$268.47
XA-S8-5A105	18.7" Right-Hand Drive Leg (Gear)	\$414.71	\$408.71	\$402.71
<b>LGS-3A001</b>	<b>16.5" Travel Self-Leveler Set</b>	<b>\$653.70</b>	<b>N/A</b>	<b>N/A</b>
XA-S9-3A001	16.5" Left-Hand Driven Leg	\$261.48	\$257.48	\$253.48
XA-S8-3A001	16.5" Right-Hand Drive Leg (Gear)	\$392.22	\$386.22	\$380.22
<b>LGS-5A001</b>	<b>18.7" Travel Self-Leveler Set</b>	<b>\$666.28</b>	<b>N/A</b>	<b>N/A</b>
XA-S9-5A001	18.7" Left-Hand Driven Leg	\$266.51	\$262.51	\$258.51
XA-S8-5A001	16.5" Right-Hand Drive Leg (Gear)	\$399.77	\$393.77	\$387.77

\$5000 Pre-Paid Freight. FOB Woodstock, Ontario

Hardware Included

\*Skid Qty. 20 Legs. All 20 legs must be the same part number. \*\*Container Truckload Qty. 200 Sets or 400 Legs.



**BETTER**

PART NUMBER	DESCRIPTION	INDIVIDUAL LIST PRICE	SKID* LIST PRICE	TRUCK/CONTAINER** LIST PRICE
<b>LG4001-700000000</b>	<b>17" Travel Standard Sand Shoe Set</b>	<b>\$540.00</b>	<b>N/A</b>	<b>N/A</b>
LG4001-710000000	17" Left-Hand Driven Leg	\$216.00	\$192.00	\$184.00
LG4001-720000000	17" Right-Hand Drive Leg (Gear)	\$324.00	\$288.00	\$276.00
<b>LG4003-700000000</b>	<b>17" Travel Low Profile Sand Shoe Set</b>	<b>\$540.00</b>	<b>N/A</b>	<b>N/A</b>
LG4003-710000000	17" Left-Hand Driven Leg	\$216.00	\$192.00	\$184.00
LG4003-720000000	17" Right-Hand Drive Leg (Gear)	\$324.00	\$288.00	\$276.00
<b>LG400B-700000000</b>	<b>17" Travel Removable Cushion Ft. Set</b>	<b>\$540.00</b>	<b>N/A</b>	<b>N/A</b>
LG400B-710000000	17" Left-Hand Driven Leg	\$216.00	\$192.00	\$184.00
LG400B-720000000	17" Right-Hand Drive Leg (Gear)	\$324.00	\$288.00	\$276.00

\$5000 Pre-Paid Freight. FOB Warrenton, Missouri No Hardware Included

Hardware Kits Available, Part No. LG2789

Hardware kits includes:

2 brace ears and 1 crank handle holder.

\*Skid Qty. 20 Legs. All 20 legs must be the same part number. \*\*Container Truckload Qty. 220 Sets or 440 Legs.



**GOOD**

PART NUMBER	DESCRIPTION	TRUCK/CONTAINER** LIST PRICE
<b>LG2T01-700000000</b>	<b>17" Travel Standard Sand Shoe Set</b>	<b>\$406.26</b>
LG2T01-710000000	17" Left-Hand Driven Leg	\$162.50
LG2T01-720000000	17" Right-Hand Drive Leg (Gear)	\$243.76
<b>LG2T03-700000000</b>	<b>17" Travel Low Profile Sand Shoe Set</b>	<b>\$406.26</b>
LG2T03-710000000	17" Left-Hand Driven Leg	\$162.50
LG2T03-720000000	17" Right-Hand Drive Leg (Gear)	\$243.76
<b>LG2TOZ-700000000</b>	<b>17" Travel Removable Cushion Foot Set</b>	<b>\$406.26</b>
LG2TOZ-710000000	17" Left-Hand Driven Leg	\$162.50
LG2TOZ-720000000	17" Right-Hand Drive Leg (Gear)	\$243.76

FOB Your Location  
Container Load Only  
No Hardware Included

Hardware Kits Available, Part No. LG2789

Hardware kits includes:

2 brace ears and 1 crank handle holder.

\*Skid Qty. 20 Legs. All 20 legs must be the same part number. \*\*Container Truckload Qty. 240 Sets or 480 Legs.



## THE ADVANTAGE OF HOLLAND LANDING GEAR.

Holland landing gear have been manufactured since the early 1940s adding up to over 9,000,000 sets worldwide, and capturing a dominate market share. Versatile Holland landing gear models have earned a reputation for quick, easy replacement for OEM-installed landing gear. And, SAF-HOLLAND's long-term commitment to continuously improving landing gear technology has resulted in innovations, such as the patented "floating riser nut" design which increases sideload capacity, and NoLube®, a sealed system that provides maximum lubrication with no need for additional grease.

That commitment continues with SAF-HOLLAND's introduction of the Atlas 55 and Classic Series landing gear.

## APPLICATION-SPECIFIC ENGINEERING.

Experience has taught us that one model of landing gear cannot satisfy every application. Instead, SAF-HOLLAND offers you a choice of application-specific landing gear models. Some that provide as much strength and capacity as possible. Others that feature lightweight and increased speed-to-ground to improve efficiencies, payload, and reduce idle-time fuel costs. Others that prevent damage from dockwalk or uneven ground.

## SAF-HOLLAND ACCOUNTABILITY.

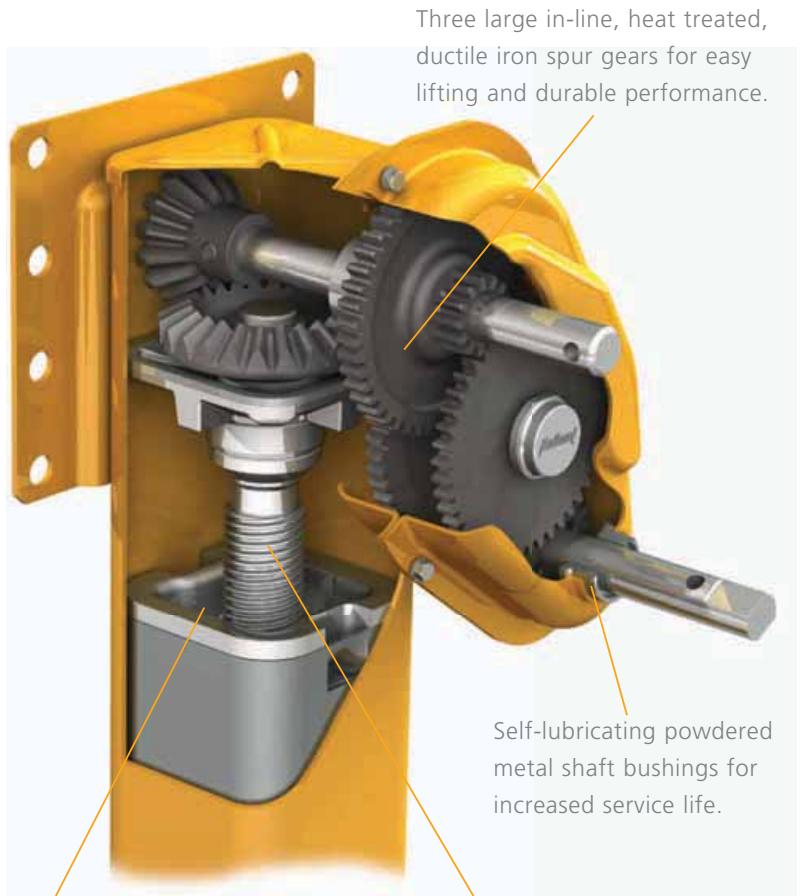
Accountability for performance and cost-efficiency is the distinctive advantage you get with every component that wears the Holland name. Accountability that defines "value" in terms of your total "cost of ownership."

You will find proof of that accountability in the proven performance of Holland landing gear in the comprehensive 5-year performance guarantee for Atlas 55 and Mark V, and the 5-year material and defects warranty for the Classic landing gear.

# MARK V **BEST** LANDING GEAR

## SPECIFY IT, RELY ON IT.

This legendary landing gear will always deliver the strength, the ease of operation, and the durability needed to exceed the demands of any landing gear application. This is the Mark V, the industry leader you can rely on every time.



Three large in-line, heat treated, ductile iron spur gears for easy lifting and durable performance.

Self-lubricating powdered metal shaft bushings for increased service life.

Deep grease reservoir in the riser nut ensures constant lubrication of the elevating screw.

Large rolled 1-5/8" Acme double lead elevating screw for additional strength and a smooth lift.

### MARK V CAPABILITIES

Lifting Capacity – Rated	
100 ft. lbs. Input Torque	62,500 lbs.
Ultimate Load Capacity	200,000 lbs.
Side Load Capacity	32,000 lbs.

### CRANK TURNS PER INCH

Low Gear	33.8
High Gear	2.5

*All tests in accordance with AAR and TTMA recommended practice*



Unique wrap-around upper leg cover provides a tough seal that helps prevent water infiltration.

Gearbox with low-temperature premium lube rated for service from -65°F to 225°F.

Double-D crank handle connection means more stabilized cranking and stronger crank connection.

Tough, 5 1/8" rounded-corner, square outer leg tubing.

Removable cushion foot option eliminates the need to replace the entire leg when just the foot is damaged.

Variety of foot options and other accessories available.

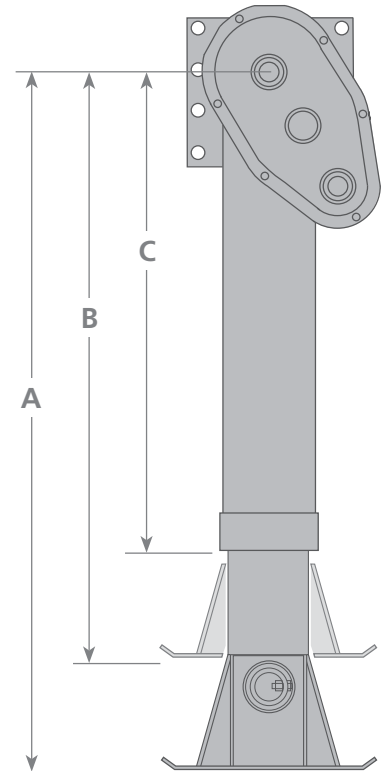
## NoLube® OPTION



A sealed system that provides maximum lubrication with no need for additional grease.

Shaft seals are added to all driveshaft and crankshaft bushings to prevent water, dirt, and other contamination.

The grease tube completely surrounds the elevating screw so that when the legs are raised or lowered, the screw receives a new coating of grease.



## HEAVY DUTY MARK V OPTION

The heavy duty Mark V landing gear is designed for the most rugged on and off-highway applications: dumps, tankers, packers, transfer trailers and intermodal applications.

46,000 lbs. SIDE LOAD CAPACITY

MARK V DIMENSIONS	PART NO.	EXTENDED LENGTH (A)	RETRACTED LENGTH (B)	UPPER LEG (C)
<b>4.5" SANDSHOE</b>				
17" Travel (16.87")	LGS-3A105	48.62"	32.10"	26.00"
19" Travel (18.67")	LGS-5A105	53.10"	34.40"	28.20"
<b>SELF-LEVELER</b>				
17" Travel (16.87")	LGS-3A001	47.30"	30.80"	26.00"
19" Travel (18.67")	LGS-5A001	51.80"	33.10"	28.20"

# ATLAS 55™ LANDING GEAR

BETTER

COMBINES LIGHTWEIGHT WITH THE TOUGHNESS TO HANDLE THE BIG LOADS.

Industry standard TTMA mounting plate.

Specially designed shaft seals within gearbox and upper housing keep water out and grease in.

Gearbox with low-temperature premium lube rated for service from -65°F to 225°F.

Exclusive Floating Nut design protects the elevating screw from damage caused by dock walk.

Upper & lower housings manufactured from high strength 80,000 lb. yield steel.

Variety of foot options and other accessories available.

## NoLube® OPTION

A sealed system that provides maximum lubrication with no need for additional grease.

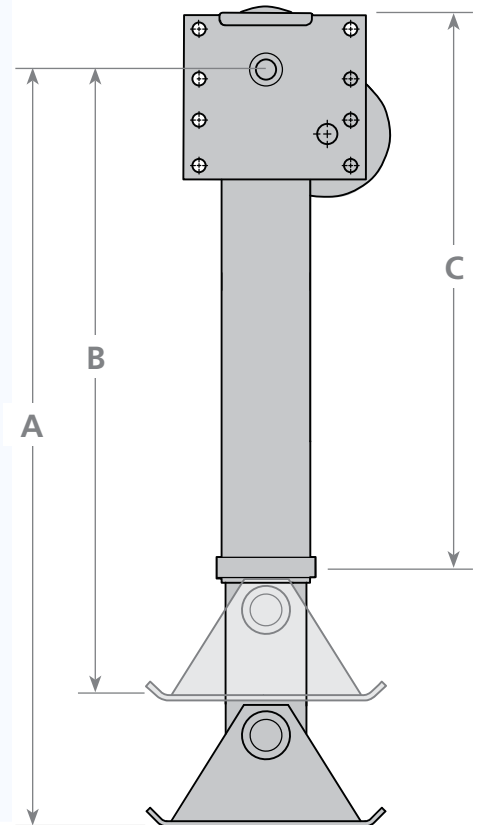
Ask your sales representative for this exclusive option.



## PATENTED\* CONSTANT MESH GEARBOX DESIGN



The CMS design keeps the gears constantly meshed, eliminating high-to-low shifting problems, slip cranking, and difficult high-to-low shifting in cold weather.



## ATLAS 55 CAPABILITIES

Lifting Capacity – Rated	
100 ft. lbs. Input Torque	55,000 lbs.
Ultimate Load Capacity	170,000 lbs.
Side Load Capacity	30,000 lbs.

## CRANK TURNS PER INCH

Low Gear	38.7
High Gear	4.5

All tests in accordance with AAR and TTMA recommended practice

\* Patent Numbers. 4,923,175 & 6,099,016

## ATLAS 55 DIMENSIONS

	PART NO.	EXTENDED LENGTH (A)	RETRACTED LENGTH (B)	UPPER LEG (C)
--	----------	---------------------	----------------------	---------------

<b>4.5" SANDSHOE</b>				
17" Travel (16.87')	LG4001-700000000	48.19"	31.19"	28.06"
<b>2" SANDSHOE</b>				
17" Travel (16.87')	LG4003-700000000	45.69"	28.69"	28.06"
<b>REMOVABLE CUSHION FOOT</b>				
17" Travel (16.87')	LG400B-700000000	46.00"	29.00"	30.06"

NOTE: 14" and 19" travel models are not available through SAF-HOLLAND aftermarket distribution channels.

# CLASSIC GOOD LANDING GEAR

POSITIONED TO SERVE  
COST-CONSCIOUS CUSTOMERS.

Industry standard  
TTMA mounting plate.

Specially formulated grease  
provides easy cranking and  
reduces component wear;  
protects from -65°F to 250°F.

Exclusive Floating Nut design  
protects the elevating screw from  
damage caused by dock walk.

Upper & lower housings  
manufactured from high  
strength 80,000 lb. yield steel.

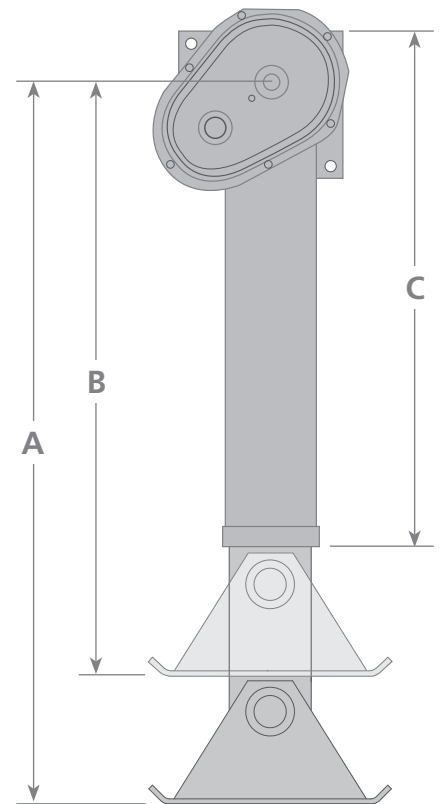
Low profile removable cushion  
foot. Limited foot options and  
accessories available.



## PATENTED\* CONSTANT MESH GEARBOX DESIGN



The CMS design keeps the gears  
constantly meshed, eliminating  
high-to-low shifting problems, slip  
cranking, and difficult high-to-low  
shifting in cold weather.



### CLASSIC CAPABILITIES

Lifting Capacity – Rated	
100 ft. lbs. Input Torque	39,000 lbs.
Ultimate Load Capacity	140,000 lbs.
Side Load Capacity	27,000 lbs.

### CRANK TURNS PER INCH

Low Gear	19.3
High Gear	3.2

*All tests in accordance with AAR and TTMA recommended practice*

CLASSIC DIMENSIONS	PART NO.	EXTENDED LENGTH (A)	RETRACTED LENGTH (B)	UPPER LEG (C)
<b>4.5" SANDSHOE</b>				
17" Travel (16.87")	LG2T01-700000000	48.19"	31.19"	28.06"
<b>2" SANDSHOE</b>				
17" Travel (16.87")	LG2T03-700000000	45.6"	28.69"	28.06"
<b>REMOVABLE CUSHION FOOT</b>				
17" Travel (16.87")	LG2T0Z-700000000	46.00"	29.00"	30.06"

NOTE: 14" and 19" travel models are not available through SAF-HOLLAND aftermarket distribution channels.

## LANDING GEAR ACCESSORIES & FOOTWEAR OPTIONS

It just makes sense that the number one supplier of aftermarket landing legs, should also be the number one supplier of landing leg accessories. Our crank handles cover not only traditional Holland models, but also others such as Fruehauf and the "T" style crank handle. Also available are a variety of sand shoes, and several versions of the removable cushion foot. All products meet the SAF-HOLLAND standard of quality and are priced competitively for distribution.

Stocked in Holland, Michigan and Wylie, Texas, crank handles can be shipped in combination with regular stock orders to save freight cost.

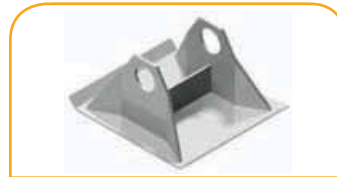
For more information, including prices, see the Holland Landing Gear Accessories Catalog XL-AM10013PM-en-US when you visit the landing gear literature section of [www.safholland.us](http://www.safholland.us).



REMOVABLE CUSHION FOOT



LOW PROFILE SAND SHOE



HEAVY DUTY SAND SHOE



H.D. SELF-LEVELING FOOT



H.D. 17" X 10" FOOT



SHAFTS AND BRACES



HAND CRANKS



CRANK HANGERS



From fifth wheel rebuild kits to suspension bushing repair kits, SAF-HOLLAND Original Parts are the same quality components used in the original component assembly. SAF-HOLLAND Original Parts are tested and designed to provide maximum performance and durability. Will-fits, look-alikes or, worse yet, counterfeit parts will only limit the performance potential and could possibly void SAF-HOLLAND's warranty. Always be sure to spec SAF-HOLLAND Original Parts when servicing your SAF-HOLLAND product.

SAF-HOLLAND USA, Inc.  
888.396.6501 Fax 800.356.3929

SAF-HOLLAND Canada Limited  
519.537.3494 Fax 800.565.7753  
Western Canada 604.574.7491 Fax 604.574.0244

[www.safholland.com](http://www.safholland.com)

